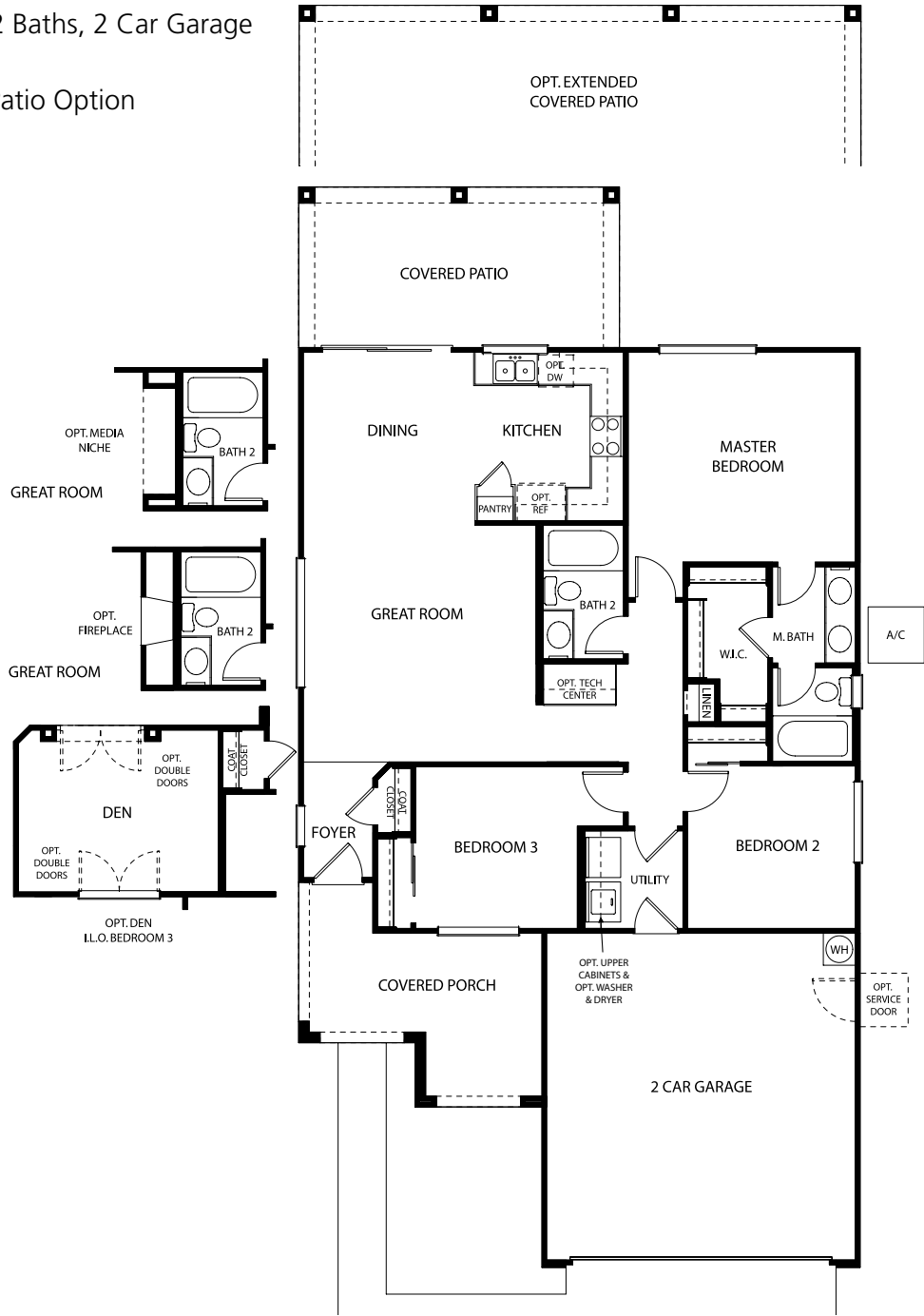




*Parke*  
AT LAVEEN MEADOWS

# THE AVILA

Plan 4801  
3 Bedrooms and 2 Baths, 2 Car Garage  
1,262 square feet  
Den & Extended Patio Option



Parke at Laveen Meadows  
5907 S. 55th Dr., Laveen, AZ 85339  
Phone: 602-237-2603 | Fax: 602-237-2607

**Elliott Homes**  
A Tradition of Quality since 1914  
www.elliotthomes.com



Interest rates are those prevailing at close of escrow. Changes in price, materials, options, availability and / or specifications may be made when necessary without notice. FHA, VA, & conventional financing available.

ROC#51293

7/23/09

# THE AVILA

---

Plan 4801

3 Bedrooms and 2 Baths, 2 Car Garage

1,262 square feet

Den & Extended Covered Patio Option

The Avila is designed for comfort and convenience.

The home features three bedrooms, two baths,

1,262 square feet, with both den and extended

patio options. It is well-planned with plenty of

windows to enhance the natural light. The third

bedroom may be optionally built as a den or home

office with a double door opening.



Elevation A



Elevation B



Elevation C

*Plans, prices and specifications are subject to change without notice. Floor plans and elevations are artists' interpretations only. Details may vary. Please ask your sales representative for current information.*